

NO.	MARSHALL	PG-FGA	FT-FTA	REB	P	TP	A
42	Secret Watkins	0-0	0-0	0	0	0	0
23	Mary Lee Snow	1-4	0-0	1	0	2	1
F 30	Lisa Jarrett	0-2	1-2	0	2	1	1
F 33	Shawna Smith	2-6	0-0	3	0	4	0
41	Shelly Rogers	-	DNP				
G 14	Gaye Heikkinen	1-1	0-0	0	3	2	0
G 15	Mitzi Birdsong	2-2	0-1	3	1	4	1
11	Kelly Chambers	-	DNP				
35	Tina Payne	-	DNP				
C 44	Laura Seay	1-2	4-5	0	1	6	0
51	Julie Schaper	-	DNP				
13	Kim Crowell	-	DNP				
				1	P.B.		
TOTALS		7-17	5-8	9	7	19	3

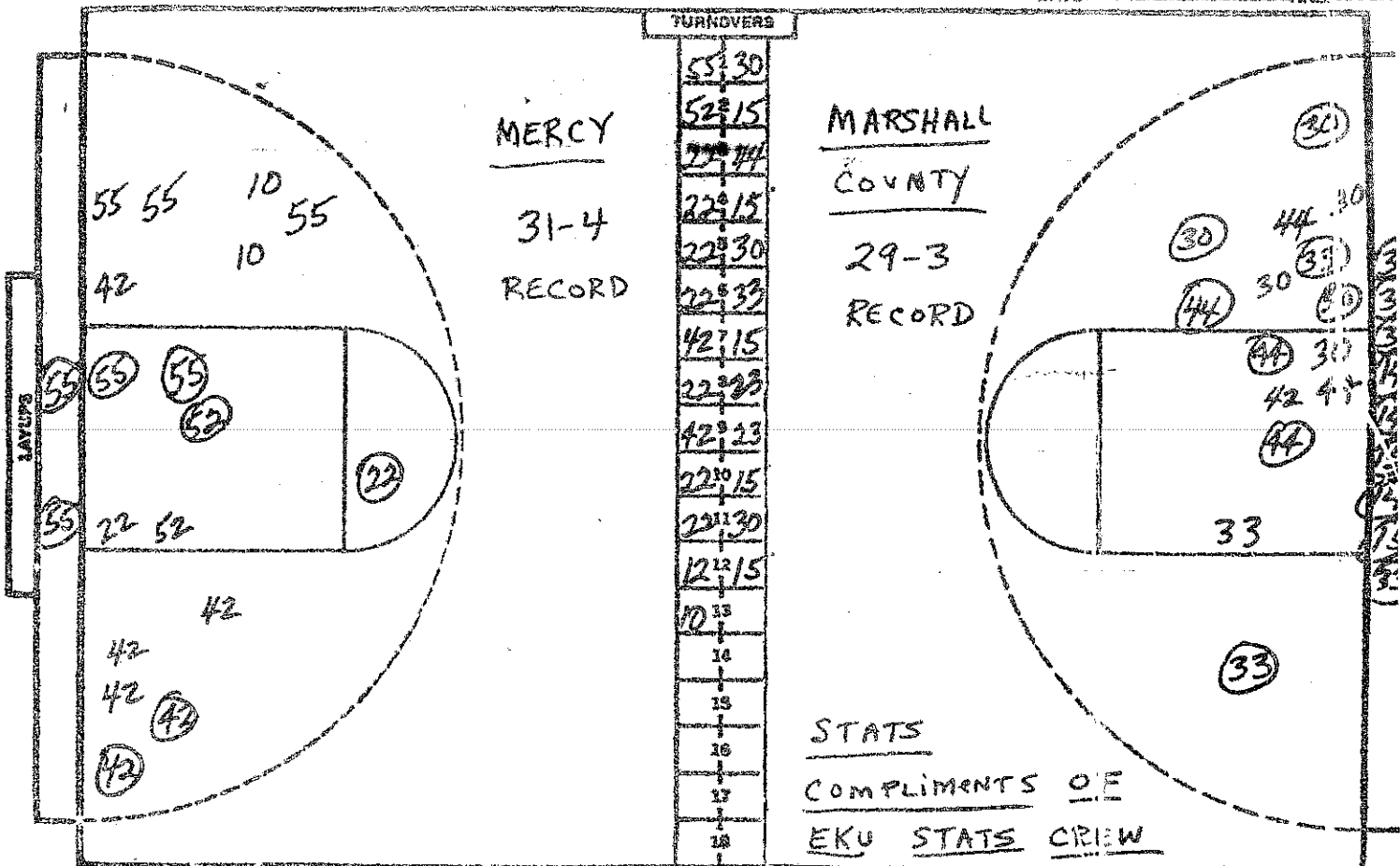
NO.	MERCY	PG-FGA	FT-FTA	REB	P	TP	A
32	Julie Baron	-	DNP				
44	Jeanne Feldkamp	1-2	4-4	4	2	6	0
F 42	Gay Hancock	0-0	0-0	3	3	0	1
C 52	Jill Sander	2-3	0-0	4	2	4	0
F 55	Marie Poschinger	2-8	2-2	2	0	6	0
20	Cindy Dumstorf	-	DNP				
10	Paula Kopp	0-0	0-0	0	0	0	0
21	Angela O'Bryan	-	DNP				
33	Pat Smith	-	DNP				
30	M. Tischendorf	-	DNP				
G 12	Terri Stickler	0-3	0-0	1	1	0	0
G 22	Gloria Montana	3-5	0-0	0	0	6	5
				0	P.B.		
TOTALS		8-21	6-6	14	8	22	6

PERCENTS 41.2 62.5 2 TEAM REBOUNDS (NOT IN TOTAL)

PERCENTS 38.1 100.0 1 TEAM REBOUNDS (NOT IN TOTAL)

MARSHALL CO. 5-14 = 19  
 MERCY 16-6 = 22

SCORE BY HALVES:  
 OFFICIALS: BRENDA HUGHES + BUD MOORE  
 ATTENDANCE: 2600 EST.



NO.	MERCY	FG-FGA	FT-FTA	RD	P	TP	A
32	Julie Baron	0-0	0-0	0	0	0	0
44	Jean. Feldkamp	1-2	4-4	4	2	6	0
42	Gay Hancock	2-7	3-4	6	3	7	1
52	Jill Sander	3-5	0-0	8	3	6	0
23	Marie Posching	7-16	3-5	2	0	17	0
24	Cindy Dumstorf	0-0	0-0	0	0	0	0
10	Paula Kopp	0-2	0-0	0	0	0	3
21	Angela O'Bryan	0-0	0-0	0	0	0	0
33	Pat Smith	0-0	0-0	0	1	0	0
30	M. Tischendorf	0-0	0-0	0	0	0	0
G-12	Terri Stickler	0-3	2-2	1	5	2	0
G-22	Gloria Montana	4-8	2-2	1	5	10	6
		-	-	1	D.B.		
		-	-				
TOTALS		17-43	14-17	23	19	48	15

NO.	MARSHALL Co.	FG-FGA	FT-FTA	RD	P	TP	A
42	Secret Watkins	0-0	0-0	0	0	0	0
23	Mary Lee Snow	1-4	3-4	1	2	5	1
F-30	Idsa Jarrett	6-11	3-4	5	2	15	5
F-3	Shawna Smith	5-10	2-2	7	0	12	3
41	Shelly Rogers	0-1	0-0	0	0	0	0
G-14	Gaye Heikkinen	4-4	0-0	1	5	8	2
G-15	Mitzi Birdsong	4-4	0-3	5	4	8	2
11	Kelly Chambers	0-0	0-0	0	0	0	0
35	Tina Payne	0-0	2-2	1	0	2	0
C-44	Laura Seay	4-7	4-6	4	3	12	0
51	Julie Schaper	0-0	0-0	0	0	0	0
13	Kim Crowell	0-0	0-0	0	0	0	0
		-	-	1	D.B.		
		-	-				
TOTALS		24-41	14-21	25	16	62	13

PERCENTS

39.5 82.4 2

TEAM RECORDS (NOT IN TOTALS)

PERCENTS

58.5 66.7 3

TEAM RECORDS (NOT IN TOTALS)

MARSHALL SO.  
5-14-24-19=62

MERCY  
16-6-8-18=48

SCORE BY HALVES

OFFICIALS: BRENDA HUGHES + BUO MOORE

2100 est.